

8/17/99

REVISIONS

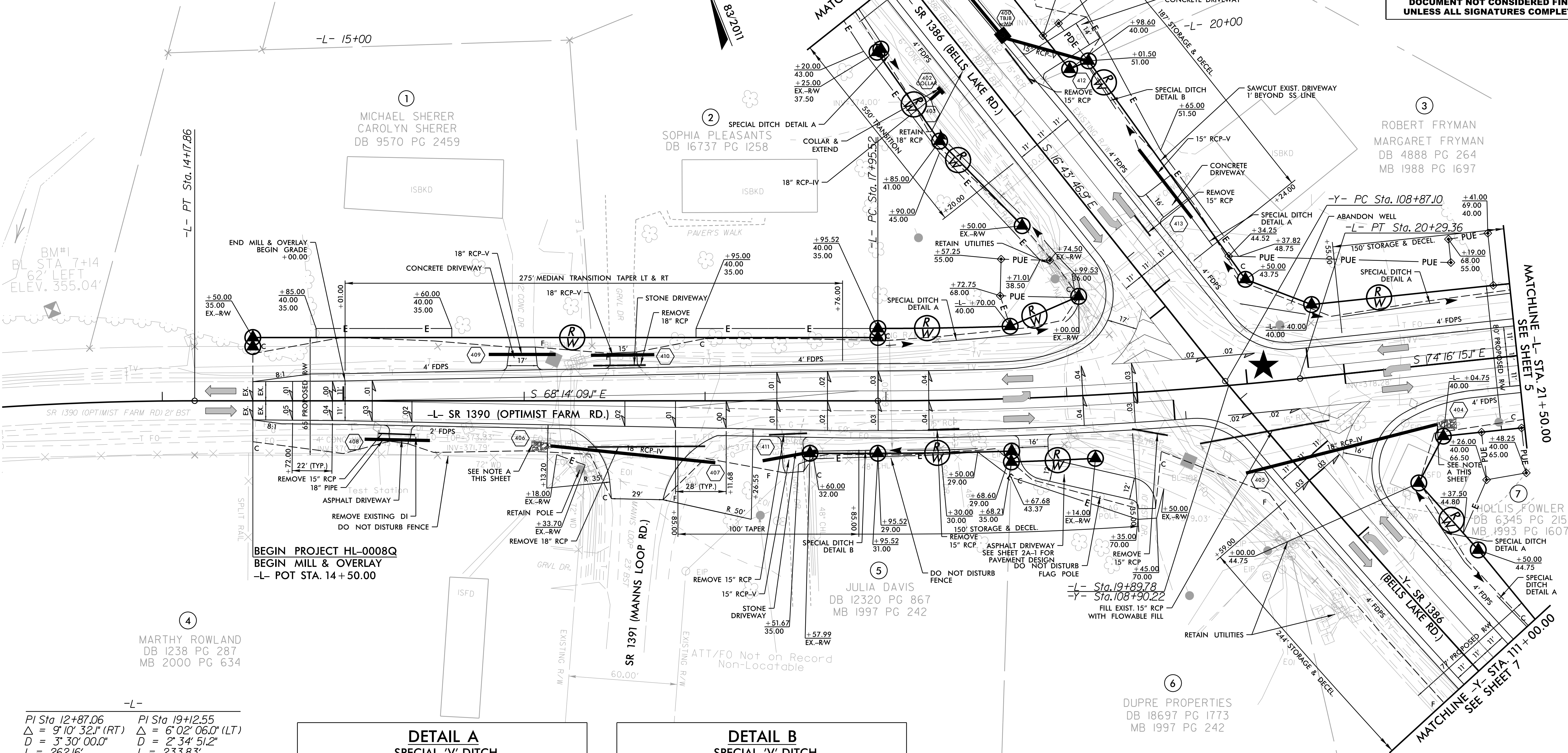
NOTES:

1. ALL DIMENSIONS ARE TO EDGE OF TRAVEL UNLESS OTHERWISE SPECIFIED.
2. CONTRACTORS TO MAINTAIN ACCESS TO ALL MAILBOXES WITHIN PROJECT LIMITS. CONTRACTOR TO RELOCATE AS NECESSARY.
3. ALL DRIVEWAY WIDTHS ARE 12' UNLESS OTHERWISE NOTED.



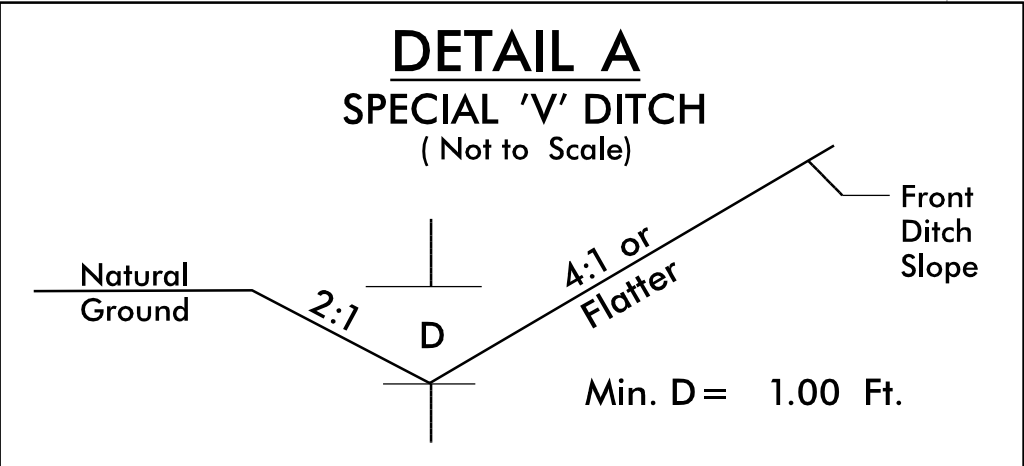
DRMP, INC.  
5888 FARMINGTON PLACE  
RALEIGH, NC 27609  
(919) 872-5115  
NC LICENSE NO. F-1524  
www.drmp.com

PROJECT REFERENCE NO.		SHEET NO.
HL-0008Q		4
RW SHEET NO.		HYDRAULICS ENGINEER
ROADWAY DESIGN ENGINEER		ENGINEER
DOCUMENT NOT CONSIDERED FINAL UNLESS ALL SIGNATURES COMPLETED		

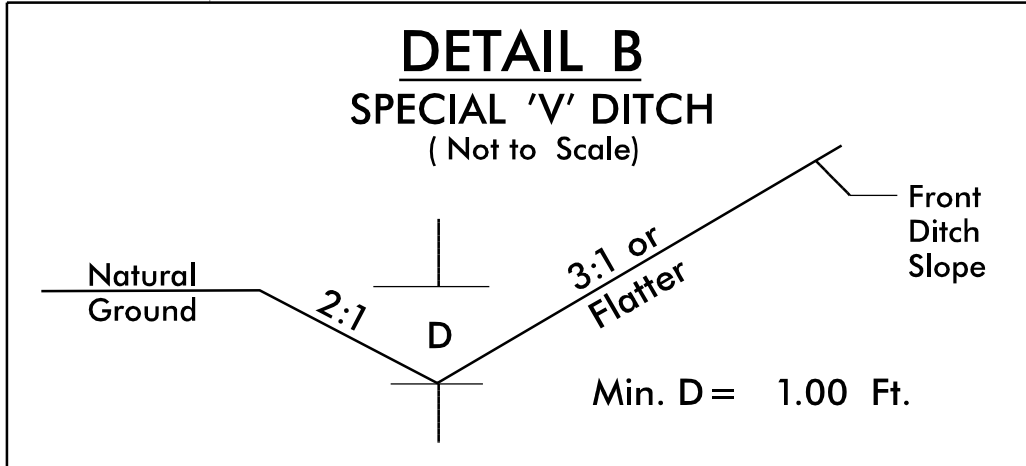


-L-  
PI Sta 12+87.06  
 $\Delta = 9' 10'' 32.1''$  (RT)  
D = 3' 30' 00.0"  
L = 262.16'  
T = 131.36'  
R = 1,637.02'  
e = EXIST  
PI Sta 19+12.55  
 $\Delta = 6' 02'' 06.0''$  (LT)  
D = 2' 34' 51.2"  
L = 233.83'  
T = 117.03'  
R = 2,220.00'  
e = .04  
Runoff EIP = 120

NOTE A:  
3 TONS OF CLASS B RIP RAP  
10 SY OF GEOTEXTILE FABRIC



FROM -L- STA. 18+00 LT TO STA. 19+00 LT  
FROM -L- STA. 20+00 LT TO STA. 22+00 LT  
FROM -Y- STA. 108+00 LT TO STA. 108+50 LT  
FROM -Y- STA. 110+00 LT TO STA. 114+00 LT  
FROM -Y- STA. 105+50 RT TO STA. 108+00 RT



FROM -L- STA. 17+60 RT TO STA. 18+50 RT  
FROM -Y- STA. 107+00 LT TO STA. 108+00 LT

★ PROPOSED SIGNAL

FOR -L- PROFILE, SEE SHEET NO. 8

FOR -Y- PROFILE, SEE SHEET NO. 9

FOR INTERSECTION DETAIL, SEE SHEET NO. 2B-1